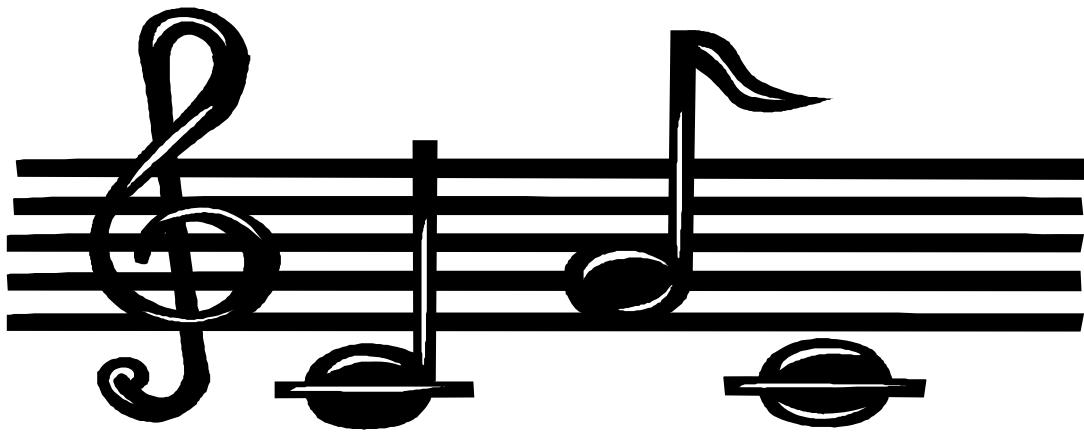


Hopewell
Middle School
Band
Handbook



2009-2010

hopewell

middle • school • bands

Audrey L. Murphy, Director
murphyal@fultonschools.org

August 10, 2009

Dear Parents and Students,

Welcome to the 2009-2010 Hopewell Middle School Band! We are pleased that you have made a commitment to this program. In our efforts to achieve musical success, it is important that communication remains a central focus. As a result, this handbook has been compiled to aid all of us in reaching our maximum potential for the school year. You will be provided with information regarding discipline, supplies, instruments, and various other band-related topics. In addition, you will be given a list of very important dates and events to assist you in making arrangements for your child to be present. As events draw near, you will receive more specific details.

This academic year promises to be a busy, yet very exciting one for the HMS Band program. I am pleased to welcome two student teachers who will be with us during the fall semester. Joining us first is Daniel Treuman, a euphonium player who has also been a member of the Phantom Regiment Drum and Bugle Corps. Later in the semester, we will have Michelle Lawler, a flutist and graduate of Milton High School. Both Mr. Treuman and Miss Lawler are very talented senior music education majors at the University of Georgia. We are very happy to have them with us!

The HMS band program continues to provide exciting opportunities for our band students. This organization has experienced significant growth and evolution each year of Hopewell Middle School's existence. Here are a few notes on what you can expect this year:

- ♪ The HMS Band will begin using the Charms Office Assistant. This is a web-based, all-encompassing data management system created to help performing arts and athletic organizations run more efficiently. The capabilities are endless, ranging from managing student information, payments, forms, and uniform distribution, to organizing the music library and tracking instrument inventory. Most importantly, Charms will allow greener, more effective communication. Please bear with us during this transitional period. In the meantime, you will still be able to access our website at www.hopewellbands.com to read announcements, check the calendar for upcoming rehearsals and performances, find links for helpful resources, and view photos.

- ♪ There will be a \$40 activity fee for each member of the HMS Band.
- ♪ Students in 7th and 8th grade will be eligible to audition for the HMS Symphonic Band, which will serve as the premiere performing ensemble of the HMS band program.
- ♪ I am very excited to announce that the HMS Band has been selected to appear as a featured performing ensemble at the 2010 Georgia Music Educators Association In-Service Conference in Savannah, GA! We will be performing on the evening of Thursday, January 28th at the Savannah Civic Center. Not only is this a prestigious honor, but it is also a rare opportunity for the students. This will certainly be the single most important performance in Hopewell Band history, and I am looking forward to embarking upon this exciting journey with our newly formed Symphonic Band!

We are always in need of parent volunteers to make all of this happen. I realize that many of you are very busy, but any donation of your time and talents to assist the band would be greatly appreciated. The HMS Band will continue to grow only with your support, not only with band activities, but also by encouraging your children to work hard and always strive for excellence. In short, success in the Hopewell Middle School band program is defined by a series of “p” characteristics: **p**ractice (at home!), **p**resence, **p**romptness, **p**reparedness, and **p**articipation.

Please carefully review this handbook in its entirety so that you will be fully informed about the band program. The information sheet/acknowledgment form, as well as the volunteer form can be found under “Forms” on the band website. *All forms are to be completed and turned in by Wednesday, August 12th for a grade (Activity fees will be accepted through Friday, August 14th).* Only students who return completed forms will be allowed to play their instruments in class.

Throughout history, music has been considered the basis of all learning. The skills and attitudes a student acquires in band can help him/her to achieve success in life. It is truly an honor and a privilege to be a part of the Hopewell Middle School Band. I am excited about working with each of you, and looking forward to a year filled with many musical adventures!

Sincerely,

Ms. Murphy

13060 Cogburn Road ♦ Milton, Georgia 30004
Phone: (678) 297-3240 Ext. 165 ♦ FAX: (770) 297-3250
www.hopewellbands.com

HMS Band Activity Fee

It is becoming more and more difficult for the school system to provide the financial support necessary to maintain a successful, active band program. As a result, **each student is asked to submit a contribution of \$40.00**. This will not only help to support the band program, but it will also consolidate traditional beginning-of-the-year expenses into one payment. The activity fee will cover a significant number of costs associated with the HMS band program, including the following:

Band Binder

Each student will receive a binder and plastic sheets for storing music and handouts. It is the responsibility of each student to replace lost or defaced band binders.

Method Books

Each student will receive a band method book and supplementary materials. By ordering instructional materials at once, we eliminate common issues such as students receiving incorrect method books, students receiving method books for incorrect instruments, or back-ordered books that could take up to several weeks for arrival.

Polo Shirt

Every HMS Band member will need a band polo shirt which will be worn for performances, band pictures, and trips. This not only looks uniform, but also makes each student easy to identify in crowds. In addition, some students like to wear band shirts on concert days and HMS spirit days. Students who currently own a shirt will have the option of declining a new one, and the cost of the shirt will either be deducted from the cost of the concert attire (7th and 8th graders) or go into the general band fund.

Clinician Fees

One element of a comprehensive music education experience is giving the students opportunities to work with renowned conductors, composers, and performers. This contribution will help to offset the cost of bringing in such esteemed musicians.

Music

The cost of one band piece is between \$50 and \$100 (Some advanced pieces are even more expensive). This contribution will allow us to continue building a music library that meets the educational needs of the students.

Miscellaneous

There are various expenses that our band program will incur throughout the year. In the past, we have hosted receptions following the winter and spring band concerts, provided snacks or dinner when a performance or clinic would not allow the students to go home, paid for transportation to Large Group Performance Evaluation, and supplemented the cost of transportation for our annual Six Flags trip. With this contribution, we can continue to provide these and other items for the students.

HMS Band Materials

Many items on this list are suggested, but you are **strongly** encouraged to obtain them. **Due to excessive abuse of equipment, all percussion students will be required to obtain the materials on the percussion equipment list.** Not only will this deter misuse, but this will also create a better sense of pride and responsibility amongst the percussionists. We strongly suggest that students who play instruments requiring reeds get reeds by the box. This is much more economical and convenient than running to the store every time one breaks (and they WILL break...frequently). Advanced wind instrument players are also encouraged to obtain step-up mouthpieces for their instruments (some students may have these already). Such a mouthpiece will show great improvement in the quality of sound produced by the student, and is an appealing option when compared to the cost of purchasing a new instrument. A beginner instrument will often sound very similar to a professional model when outfitted with a step-up mouthpiece. We highly recommend searching online for the best prices. A list of music vendors will be available on our website for your convenience. We do suggest, however, that you call to be certain your items are in stock before making a trip to the store.

All Band Students

Metronome/Tuner

- *Suggested brands: Sabine MT9000, Korg TM-40*

Tuner Pickup Mic (Brass/Woodwind players only)

- *Suggested brands: Peterson TP-1, Korg CM-100*

Clarinet and Bass Clarinet

- ♪ Vandoren Reeds, 2 ½ strength or 3 strength
- ♪ Vandoren 5RV Lyre mouthpiece (clarinet)
- ♪ Vandoren B45 mouthpiece (bass clarinet)
- ♪ Bonade inverted ligature
- ♪ Plastic reed holder (holds 4 reeds)
- ♪ Clear mouthpiece patches

Alto, Tenor, and Baritone Saxophone

- ♪ Vandoren Reeds, 2 ½ or 3 strength
- ♪ Rousseau (5R facing) or Selmer C* mouthpiece
- ♪ Rovner Ligature
- ♪ Plastic reed holder (holds 4 reeds)
- ♪ Clear mouthpiece patches

Trumpet

- ♪ Bach 5C or 3C mouthpiece

French Horn

- ♪ King H2 or Conn H2 mouthpiece

Trombone

- ♪ Bach 6 1/2AL mouthpiece
- ♪ Slide-o-Mix (for slide lubrication)
- ♪ Small (trial-sized) spray bottle for water

Baritone/Euphonium

- ♪ Bach 6 1/2AL mouthpiece

Tuba

- ♪ Bach 18 or Bach 24AW or Conn Helleberg 7B mouthpiece

Required Equipment List for the HMS Percussionist

All HMS percussion students must have their own sticks and mallets. Below is a detailed list of the equipment that each student should have. Each list is sorted by grade level. It is ideal and recommended for percussionists to build a collection of sticks and mallets as they begin to perform on more diverse percussion instruments at the middle school level. If you cannot find a stick or mallet at your local music store try one of the online vendors listed below. If you are uncomfortable shopping online or have trouble finding an item, please refer any questions to Ms. Murphy (murphyal@fultonschools.org).

***Most items can be purchased at your local music store or online at
steveweissmusic.com, lonestarpercussion.com, and
columbuspercussion.com***

You will be given average priced options on sticks and mallets. Unlike wind instruments where the difference between a good and bad instrument may be a few hundred dollars, the difference between good and bad mallets is typically only a few dollars. The items in bold are highly recommended.

6th Grade

1. **The Vic Firth EP2 Intermediate Education Pack (contains sticks and mallets)**
2. **Percussion Learning Kit (includes snare and bells)**

7th Grade

All of the 6th Grade list plus:

1. 1 pair of general timpani mallets
 - a. **Innovative Concert Series CT3 Medium General - \$28.00**
 - b. **Cleveland Bamboo CDB4 Medium Classic Ball - \$32.95**
 - c. **Or any similar brand**

8th Grade

All of the 6th and 7th Grade lists plus:

1. 1 pair of hard timpani mallets
 - a. **Innovative Concert Series CT5 Hard - \$28.00**
 - b. **Cleveland Bamboo Timpani Mallets CDB2 Ultra-Hard - \$26.95**
2. 1 pair of medium Marimba Mallets
 - a. **Innovative Marimba Mallets – Mark Ford Legato Medium-Soft IP802 - \$29.90**
 - b. Or any similar brand

Purchasing New Instruments

As a student's interest in and commitment to the band program intensifies, parents often seek to purchase a higher quality instrument. There are three basic "grades" of musical instruments available for purchase.

Beginner

These instruments are used by younger students and are designed with the beginner band student in mind. They will withstand a moderate amount of the abuse that younger students tend to inflict on their instruments (*accidentally, of course!*).

Intermediate

These instruments are sometimes called "step-ups." They are typically played by advanced middle school students and high school students. These instruments are of a higher quality than beginner instruments. They will have nicer features and will not withstand as much abuse as the beginner model. Parents and students should notice a *significant* improvement in sound quality shortly after a student moves to this level of instrument.

Professional

These instruments are used by the **most** serious middle and high school students, college music majors, and professionals. These instruments are of the finest quality and craftsmanship, and will produce the truest symphonic sounds. They will withstand very little abuse, and cost substantially more than the beginner and step-up models.

Professional model instruments are exclusively for those who have a long-term commitment to music.

Parents/guardians who wish to purchase a new instrument should feel free to contact Ms. Murphy, who will be happy to suggest a make and model that will suit your child's needs. Please note: When a step-up instrument is purchased, the beginner model should be kept for later use in marching band.

School-Owned Instruments

Students who are switched to another instrument or who have expressed financial need may have access to a school-owned instrument (**based on availability**). *Instruments are assigned at the discretion of the director and are available in VERY limited quantities.*

Students and the parents of students who use school-owned instruments must sign a liability/loan contract. **School instruments will NOT be released until this contract is completed and returned with a \$25 contribution to cover regular and routine maintenance.** In signing the contract, parents/guardians are assuming responsibility for any minor repairs incurred during the period of use. **Due to increasing abuse of instruments and the growth of the HMS band program in recent years, students using school-owned instruments will be required to provide their own mouthpieces.** Please refer to the materials list for appropriate mouthpieces. In the event of loss or major damages inflicted upon the instrument (major scratches, dents, dented valves, broken piping, curled bells, etc.) **the student (parent) is financially responsible for replacement/repair!** These instruments are very expensive and are purchased on a very limited budget. Students are responsible for cleaning instruments and performing regular upkeep duties, such as oiling valves, greasing slides, and applying cork grease where needed. Please be sure to keep cases latched and dusted!

Switching Instruments

Some students will be asked to change instruments so that our band can have balanced instrumentation. This is the perfect opportunity for selected students to learn to play a new instrument. Typically, switches will remain within instrument families (ex: clarinet-bassoon, trumpet-euphonium). Of course, there are some exceptions to this rule. Our band is in need of multiple students to play the following instruments: tuba, euphonium (baritone), French horn, bass clarinet, bassoon, and oboe. **Please note: Students may NOT switch to percussion instruments (unless the band is in DIRE need of more percussion players). All instrument changes must be approved by Ms. Murphy. Instrument changes are based on ensemble need, as well as the availability of school-owned instruments.**

Take Instruments Home!

Students are required to practice at home on a daily basis. **Minimum** practice requirements are: 6th grade – 15 minutes a day, 7th grade – 20 minutes a day, 8th grade – 30 minutes a day. The most significant improvements are made through **consistent** practice. Practicing two hours one particular day and not playing again for a week will not only hinder progress, but can also damage the muscles necessary for playing the instrument. Please be mindful that the storage closet should only be used to store instruments **during school hours!** Students are strongly discouraged from leaving instruments at the school overnight (Percussion students may leave their instruments during the week, but **must** take them home every Friday afternoon. Special arrangements will be made for students who play large instruments). Students who leave instruments at school do so at their own risk. *The school system assumes no liability for theft of, loss, or damage to student instruments and/or property left after school hours.*

Grading Policy

Classwork/Participation	25%
Performances	25%
Homework/After-School Rehearsals	10%
Playing Tests	20%
Written Tests	20%

Class/Rehearsal Participation Policy

All students are expected to play each day in band class. Students who do not play or who fail to bring required materials to class will quickly notice a decline in their grades. These are the top four excuses for not playing and my policy on each:

“My braces hurt.” We completely understand that orthodontic appliances can sometimes be very painful. We will work with students on this as long as we do not feel that they are taking advantage of the situation. Students are to follow doctors’ instructions for easing the pain. One day is typically all that is allowed for brace pain.

“I forgot my horn.” Instruments are a VERY vital part of being in the band. In short, if you forget your instrument, you cannot play in class/rehearsal. If you do not play, you are not fully participating, and you are missing out on the day’s lesson. **A student who does not have his/her instrument on the day of a playing test will receive a zero on the test.** Part of being in band is learning responsibility. The students are discouraged from calling parents and asking them to bring instruments or other materials that were left at home. **This is the sole responsibility of each student.**

“My instrument is in the shop.” If a student’s instrument is in the shop, he/she must present the directors with the following information:

- The name of the shop performing the repair
- The date the instrument was taken to the shop
- Parent/Guardian signature

“I don’t feel well.” In general, if you are well enough to be at school, you are well enough to participate in class. We realize that this is not always the case. Students who are not well enough to play will be sent to the clinic. Incidents of this nature will be handled on an individual basis.

Make-Up Policy

Due to the various other activities that make up student life at HMS, it is **extremely** important for students to be in class, at extra rehearsals, and at performances. Our success depends upon the attendance and hard work of each band member. Each student is important, and we cannot have a successful program without him/her! Absences (except for severe illness or loss of family members/friends) **must be pre-approved by the director to avoid penalty. A note must be presented at least ONE DAY prior to the rehearsal. Unless an emergency occurs, notes received the day of the rehearsal**

or later will result in an unexcused absence. Students receiving two unexcused absences from rehearsals prior to a concert will not be allowed to participate in the performance. A student who misses class work for any reason will receive a zero in the grade book until the assignment is made up. Band members will be tested regularly to determine mastery of various musical concepts. **Students who receive excessive unexcused absences will be referred to the administration for dismissal from the Hopewell band program.** *Please note: Absences from performances will be excused at the director's discretion. Due to the effects of individual absences from concerts, performances will count as 25% of the band grade. A student who receives an excused absence from a performance must submit a project assigned by the director as compensation. Absences from performances are STRONGLY discouraged.*

Extra Credit

Students will be allowed to earn extra credit points throughout the year. Extra credit opportunities include band, orchestra, or chorus concerts, private lessons, working at music events, performing in church, etc. The fall is a very busy season for the local high school marching bands, so keep your eyes and ears opened for upcoming performances. In addition, the metro Atlanta area is rich with cultural events. Extra credit is to be requested **before** the event takes place. Students will be required to submit a small completed assignment as evidence of participation. One point will be added to the final quarter grade for each extra credit assignment completed. **Students are allowed a maximum of 5 extra credit points per nine-week period.**

Extra Help

Ms. Murphy will be available some days before and/or after school to give extra help to those students who need it. Should class time not allow, students may also use these times for making up tests. There will be a sign up sheet posted weekly on the band room door.

Daily Procedure

- ♪ Students are to bring instruments and band materials to the band room each morning when they are dismissed to homeroom at 8:10 each morning. **Only students who have signed up for extra help are allowed on the Connections hall before the 8:10 bell!**
- ♪ Band classes will begin each day with students arriving on time, prepared, and with all required materials (pencil, band binder, book, music, instrument).
- ♪ Students are to be seated with instruments assembled and materials out no later than 2 minutes after the start of the class (percussion is allotted 5 minutes). If the director is on the podium and a student is not ready for class, he or she will receive a tardy. The door will be shut at the start of class.
- ♪ There is to be no individual playing before class begins. We will warm up as a group.
- ♪ Students are to return all instruments, materials, and equipment to their proper storage places at the conclusion of class or rehearsal. Our band room is so beautiful. Let's work to keep it this way!

Class/Rehearsal Rules

- ♪ Students may only talk, play instruments, and get out of seats when given permission.
- ♪ Students are to raise their hands and wait to be recognized before speaking.
- ♪ Students are to have their instruments, pencils, and music/books in each rehearsal.
- ♪ All food, gum, candy, and flavored drinks are to be finished and discarded before students enter the band room.
- ♪ Students are to respect themselves and others.

Consequences

- ♪ 1st Offense – Verbal warning
- ♪ 2nd Offense – Tacet Zone (The student will be asked to put his/her instrument away for the remainder of class, and a note will be sent home).
- ♪ 3rd Offense – Parents contacted
- ♪ 4th Offense – Private detention
- ♪ 5th Offense – Conference with parents and administrator to discuss dismissal from the HMS band program.

Severe Discipline Clause:

In the event a student blatantly and/or maliciously causes a serious classroom disruption, the student will immediately be sent to the principal's office, and will serve the fifth offense consequence.

Concert Attire

For most concerts, band members are to wear formal “concert attire.” Appearance is a major part of performing, and we will often be judged on the way we look as a group. The Hopewell Middle School Band strives to look as classy, professional, and uniform as possible. Great sounding bands look great!

6th Grade Concert Attire

HMS Band polo shirt, khaki pants, and **DRESS** shoes

Concert Band Uniform

Girls: White tuxedo shirt, long black skirt, red bow tie/cummerbund, black hose, and black dress shoes

Boys: White tuxedo shirt, black tuxedo pants, red bow tie/cummerbund, black socks, and black dress shoes

Symphonic Band Uniform

Girls: Gown, black hose, black dress shoes

Boys: White tuxedo shirt, black tuxedo pants, vest, red bow tie, black socks, black dress shoes

7th and 8th Grade Band Parents: Do not purchase uniform components at this time. For optimal uniformity and convenience, all uniforms will be ordered through the band program. More information will be available in the near future.

Private Lessons

One of the most valuable investments a parent can make for a band student is in a good private lesson teacher. There is nothing like the instruction of a musician who has dedicated his or her life to studying and perfecting the art of one instrument. **We strongly encourage students to enroll in private lessons.** Private lessons are for all students – beginners, those who are struggling, and advanced students. **Anyone can benefit from a private instructor.** Lessons are also a great idea for students auditioning for honor ensembles outside of the Hopewell program. A list of outstanding teachers and contact information will be posted on our band website, along with resumes and fliers (if available).

Get Involved! Branch Out! Explore!

There are many different ways for students to supplement what they have learned in band class. Here are just a few:

- ♪ Participate in the Solo and Ensemble Festival
Fees: Solo - \$7; Ensemble - \$4 per student, **due Tuesday, September 1st!**
- ♪ Audition for the Youth Concert Band of Atlanta (www.ycb-atl.org)
- ♪ Audition for the Metropolitan Youth Symphony Orchestra (www.mysoatlanta.com)
- ♪ Audition for All-State Band (www.gmea.org)
Registration fee is \$18, **due Tuesday, September 15th!**

For more information regarding these and other band activities, please do not hesitate to contact Ms. Murphy!

Withdrawing from the HMS Band Program

Students who join the HMS Band program are making a commitment to a three-year, progressive course. While it is my hope that every student will remain in band throughout middle school and even into high school, I realize that some may decide to choose a different path. However, these individual decisions, though unintentionally, can be detrimental to the remainder of the band. The following policy has been implemented to maintain the integrity of the ensembles:

6th Grade Students – may withdraw within the first ten days of school **OR** at the end of the first semester (Forms must be submitted by Friday, December 18th).

7th and 8th Grade Students – may withdraw within the first ten days of school **OR** at the end of the school year.

Teacher request for schedule change – Parents/guardians of students who are disruptive, destructive, or unwilling to work will be contacted to discuss dismissal from the band program.

Schedule changes will not be made without the approval of the director and an administrator. Please note: It is **not** the practice of the HMS Band Program to re-admit students who have withdrawn from the band program. The high school band directors also frown upon admitting students who did not complete the middle school band experience. Students should take this into careful consideration before submitting a schedule change request!

HMS BAND CALENDAR OF EVENTS 2009-2010

August	17	Symphonic Band Auditions: Percussion (during class)
	18	Symphonic Band Auditions: Brass/Woods (after school)
September	1	BAND PARENT MEETING, 6:30pm, HMS Cafeteria
		Solo and Ensemble registration due (7th & 8th Graders)
	4	8th Grade Band Night, Milton High School
	10	Symphonic Band Woodwinds, 3:45-5pm
	15	All-State Band audition registration due
	17	Symphonic Band Brass, 3:45-5pm
	18	8th Grade Band Night, Alpharetta High School
	24	Symphonic Band Percussion, 3:45-5pm
October	1	Symphonic Band, 3:45-5pm
	2	Music Dept. Rock-a-Thon, 5-10pm
	6	Fall Music Sampler (Symphonic Band) 7pm, HMS Gym
	15	Symphonic Band, 3:45-5pm
	22	Symphonic Band, 3:45-5pm
	29	Symphonic Band, 3:45-5pm
November	5	Symphonic Band, 3:45-5pm
	12	Symphonic Band, 3:45-5pm
	14	Solo and Ensemble Performance Evaluation, Renaissance Middle School
	17	Concert Band, 3:45-5pm
	20	Symphonic Camp (Mandatory – Symphonic Band) 4:30-9:30pm, Milton High School
December	1	Concert Band, 3:45-5pm
	2	6 th Grade Band, 3:45-5pm
	3	Symphonic Band, 3:45-5pm
	5	1 st Round All-State Band auditions, Haynes Bridge MS
	7	6 th Grade Band, 3:45-5pm
	8	Winter Concert, 7pm, HMS Gym (All bands)

(December)	10	Symphonic Band, 3:45-5pm
	10-12	UGA Middle School Band Festival (Selected students)
January	7	Symphonic Band, 3:45-5pm
	9	2 nd Round All-State Band Auditions, Perry, GA
	14	Symphonic Band GMEA Preview Concert, 7pm, Milton High School
	16	Make-up All-State Band Auditions (Inclement Weather)
	21	Symphonic Band, 3:45-5pm
	26	Symphonic Band, 3:45-5pm
	27	Symphonic Band Departs for Savannah
	28	Symphonic Band GMEA Performance, 7:30pm Savannah Civic Center
	29	Symphonic Band Returns to HMS
February	9	Concert Band, 3:45-5pm
	11	Jazz a la Mode, 7pm, Milton HS (Jazz Band)
	16	Concert Band, 3:45-5pm
	18	Symphonic Band, 3:45-5pm
	19-20	Middle School District Honor Band Clinic, Milton High School
	23	Concert Band, 3:45-5pm
	25	Symphonic Band, 3:45-5pm
	26	Symphonic Camp (Mandatory – Concert Band) 4:30-9:30pm, Milton High School
March	2	Milton Cluster Pre-Evaluation Concert, Time TBA, Milton High School (Concert and Symphonic Bands)
	4-6	All-State Band Clinic, Savannah, GA
	9	Concert Band, 3:45-5pm
	11	Symphonic Band, 3:45-5pm
	16	Concert Band, 3:45-5pm
	18	Symphonic Band, 3:45-5pm
	22-23	Large Group Performance Evaluation (Concert and Symphonic Bands), Mays High School – Date/Time TBA
April	14	6 th Grade Band, 3:45-5pm
	20	Concert Band, 3:45-5pm
	21	6 th Grade Band, 3:45-5pm
	22	Symphonic Band Rehearsal, 3:45-5pm
	24	Music in the Parks Festival, Six Flags over Georgia (6th Grade Band)
May	4	Concert Band, 3:45-5pm
	5	6 th Grade Band, 3:45-5pm

(May)	6	Symphonic Band, 3:45-5pm
	8	Band Festival, Six Flags over Georgia (Concert Band)
	11	Spring Concert, 7pm, HMS Gym (All bands)

Please note: The above dates and times are subject to change. You will be promptly notified of any changes. More specific calendar information will be distributed in the future.